

**VILLAGE OF DOWNERS GROVE**  
**REPORT FOR THE VILLAGE COUNCIL MEETING**  
**OCTOBER 19, 2010 AGENDA**

<b>SUBJECT:</b>	<b>TYPE:</b>	<b>SUBMITTED BY:</b>
Parking and Loading Zone Modifications for Mochel Drive at Charles Place	✓ Resolution Ordinance Motion Discussion Only	Nan Newlon, P.E. Director of Public Works

**SYNOPSIS**

An ordinance has been prepared to amend sections of the Municipal Code concerning parking changes on the east side of Mochel Drive south of Curtiss Street and on the Parking Deck driveway.

**STRATEGIC PLAN ALIGNMENT**

The Five Year Plan and Goals identified *Top Quality Village Infrastructure and Facilities*.

**FISCAL IMPACT**

N/A

**UPDATE & RECOMMENDATION**

This item was discussed at the October 12, 2010 Village Council meeting. Staff recommends approval on the October 19, 2010 active agenda.

**BACKGROUND**

The proposed amendment would convert the three (3) 30-Minute loading spaces on Mochel Drive to 2-Hour parking spaces and provide a new loading zone consisting of two (2) spaces along the north side of the Parking Deck driveway, located at the southeast corner of the Charles Place building. Staff has received this requested parking amendment from the Downtown Management Corporation and the owners of Charles Place.

There are three on-street parking spaces on the east side of Mochel Drive immediately in front of Charles Place. These spaces are currently 30-minute loading zones. On June 16, 2009 Council approved the designation of the three loading zone spaces in front of Charles Place at the request of the property owner. At that time construction of the building was reaching completion and the loading zone facilitated the loading and unloading of materials as the interior space was contracted and occupied. At this time building tenants have been established and there is the need for parking for customers in front of the building on Mochel Drive, and for deliveries to the building from the service doors to the south. The proposed amendment would classify these spaces as 2-hour public parking spaces.

There are currently 15 diagonal parking spaces on the north side of the parking deck drive between Mochel Drive and Washington Street. Eleven are 4-hour public parking spaces and four are 2-hour public parking spaces. The proposed amendment would convert the two 2-hour spaces immediately adjacent to Charles Place to a 30-minute loading zone. The proposed loading zone spaces on the south side of Charles Place would not cause an adverse parking condition in this area and the proposed 2-Hour parking spaces would be consistent with restrictions on other streets in the downtown area.

This item was presented at the September 8, 2010 Transportation and Parking Commission meeting with the representatives of the Downtown Management Corporation and area property owners in attendance. The Commission voted unanimously to approve the proposed parking modifications.

**ATTACHMENTS**

Meeting Minutes – TAP Commission meeting September 8, 2010

Exhibit

Ordinance

**VILLAGE OF DOWNERS GROVE**  
**COUNCIL ACTION SUMMARY**

**INITIATED:** Public Works **DATE:** October 19, 2010  
(Name)

**RECOMMENDATION FROM:** Transportation and Parking Commission **FILE REF:** \_\_\_\_\_  
(Board or Department)

**NATURE OF ACTION:**

- ☒ Ordinance  
☐ Resolution  
☐ Motion  
☐ Other

**STEPS NEEDED TO IMPLEMENT ACTION:**

Motion to Adopt AN ORDINANCE AMENDING  
CERTAIN PARKING PROVISIONS, as presented.

**SUMMARY OF ITEM:**

Adoption of the attached ordinance shall amend loading zone and 2 hour parking provisions on portions of Mochel Drive.

**RECORD OF ACTION TAKEN:**

---

---

---

ORDINANCE NO. \_\_\_\_\_

**AN ORDINANCE AMENDING CERTAIN PARKING PROVISIONS**

BE IT ORDAINED by the Village Council of the Village of Downers Grove in DuPage County, Illinois, as follows: (Additions are indicated by ~~shading~~/underline; deletions by ~~strikeout~~):

**Section 1. That Section 14.105.07. is hereby amended to read as follows:**

**14.105.07. Same--Between 6:00 A.M. and 6:00 P.M., except on Sundays and holidays. (2-Hour Parking)**

Except on Sundays and holidays, no person shall park, stop or let stand any automobile, motor vehicle or other vehicle for more than two consecutive hours at any time between the hours of 6:00 A.M. and 6:00 P.M., local time, in any of the following locations, excluding those spaces designated as handicap parking under Section 14-108:

*Burlington Avenue*, on both sides, from Wilcox Avenue to a point one hundred sixty-five feet east of the east line of Fairview.

*Burlington Avenue*, on the south side, from Forest Avenue to Main Street, and from a point fifty-one feet east of the east line of Main Street to Mochel Drive.

*Burlington Avenue*, on the south side from a point on hundred ninety (190) feet east of Mochel Drive to a point two hundred seventy (270) feet east of Mochel Drive.

*Curtiss Street*, on the south side, from the east line of Forest Avenue to the west line of Main Street.

*Curtiss Street*, on the south side from a point one hundred thirty-five feet east of the east line of Main Street to a point four hundred sixty-five feet east of the east line of Main Street.

*Curtiss Street*, on the north side, from the east line of Forest Avenue to a point one hundred ninety-six feet east of the east line of Forest Avenue; from a point two hundred thirty-five feet east of the east line of Forest Avenue to the west line of Main Street; from a point ninety-three feet east of the east line of Main Street to a point two hundred seventy-eight feet east of the east line of Main Street; and from a point one hundred seventy-six feet west of the west line of Washington Street to a point two hundred twelve feet west of the west line of Washington Street.

*Forest Avenue*, on the west side, from one hundred twenty feet north of the north line of Curtiss Street, to a point one-hundred sixty feet north of the north line of Curtiss Street.

*Grove Street*, on the north side, from the northeast corner of the alley adjacent to Fishel Park to Main Street.

*Grove Street*, on the south side, from a point one hundred eight feet west of the west line of Main Street to a point twenty-two feet west of the west line of Main Street.

*Highland Avenue*, on the east side, from a point seventy feet north of the north line of Warren Avenue to the south line of Rogers Street.

*Lot C*, as posted.

*Main Street*, on the east side, from the north line of Maple Avenue to the south line of Burlington Avenue, and from the north line of Warren Avenue to a point three hundred six feet north of the north line of Warren Avenue, and from a point four hundred five feet north of the north line of Warren Avenue to the south line of Franklin Street.

*Main Street*, on the west side, from the north line of Maple Avenue to the north line of Grove Street, and from a point forty-eight feet north of the north line of Grove Street to the south line of Franklin Street.

*Mochel Drive*, on the east side, from a point ninety (90) feet south of the south line of Curtiss Street, to a point one hundred sixty (160) feet south of the south line of Curtiss Street.

*Warren Avenue*, on the north side, from a point one hundred three feet east of the east line of Forest

Avenue to a point thirty-seven feet west of the west line of Main Street.

*Warren Avenue*, on the north side, from the west line of Highland Avenue to the east line of Main Street.

*Washington Street*, on the east side, from the south line of Burlington Avenue to a point twenty feet north of the north line of Curtiss Street, and from the north line of Maple Avenue to a point one hundred fifty feet north of the north line of Maple Avenue.

*Washington Street*, on the west side, from Burlington Avenue to Curtiss Street, and from the south line of Curtiss Street to a point one hundred ninety feet of the south line of Curtiss Street.

*Wilcox Avenue*, on both sides, from Burlington Avenue to Maple Avenue. (Ord. No. 1780, § 6; Ord. No. 3020, § 2; Ord. No. 3100, § 4; Ord. No. 3106, § 6; Ord. No. 3254, § 5.)

**Section 2. That Section 14.108.4. is hereby amended to read as follows:**

**14.108.4. Thirty minute loading zones**

No person shall park or let stand any automobile, motor vehicle or other vehicle between the hours of 7:00 a.m. and 3:00 p.m., except for purposes of loading and unloading for a period of time not to exceed thirty consecutive minutes, in the following locations:

*Burlington Avenue*, on the south side, from a point fifteen (15) feet east of the east line of Mochel Drive to a point thirty-five (35) feet east of Mochel Drive.

*Curtiss Street*, on the south side, from to a point eighty (80) feet east of the east line of Main Street to a point one hundred thirty-five (135) feet east of Main Street.

*Forest Avenue*, on the west side, from a point one hundred sixty (160) feet north of the north line of Warren Avenue to a point one hundred ninety (190) feet north of the north line of Warren Avenue.

*Highland Avenue*, on the west side, from a point thirty-five (35) feet north of the north line of Warren Avenue to a point ninety-five (95) feet north of the north line of Warren Avenue.

~~*Mochel Drive*, on the east side, from to a point ninety (90) feet south of the south line of Curtiss Street to a point one hundred sixty (160) feet south of the south line of Curtiss Street.~~

*Rogers Street*, on the south side, from a point twenty (20) feet east of the east line of Main Street to a point sixty-five (65) feet east of the east line of Main Street.

*Alley east of 1050 Curtiss Street*, from a point one hundred nineteen (119) feet north of the north line of Curtiss Street to a point one hundred seventy-eight (178) feet north of the north line of Curtiss Street.

*East-West Parking Deck driveway access*, on the north side, from a point ninety (90) feet east of the east line of Mochel Drive, to a point one hundred ten (110) feet east of the east line of Mochel Drive.

(Ord. No. 2524, § 4; Ord. No. 2745, § 2; Ord. No. 3191, § 4; Ord. No. 3193, § 2; Ord. No. 3404, § 2.)

**Section 3.** That all ordinances or parts of ordinances in conflict with the provisions of this ordinance are hereby repealed.

**Section 4.** That this ordinance shall be in full force and effect from and after its passage and publication in the manner provided by law.

---

Mayor

Mochel @Charles Pl

Passed:

Published:

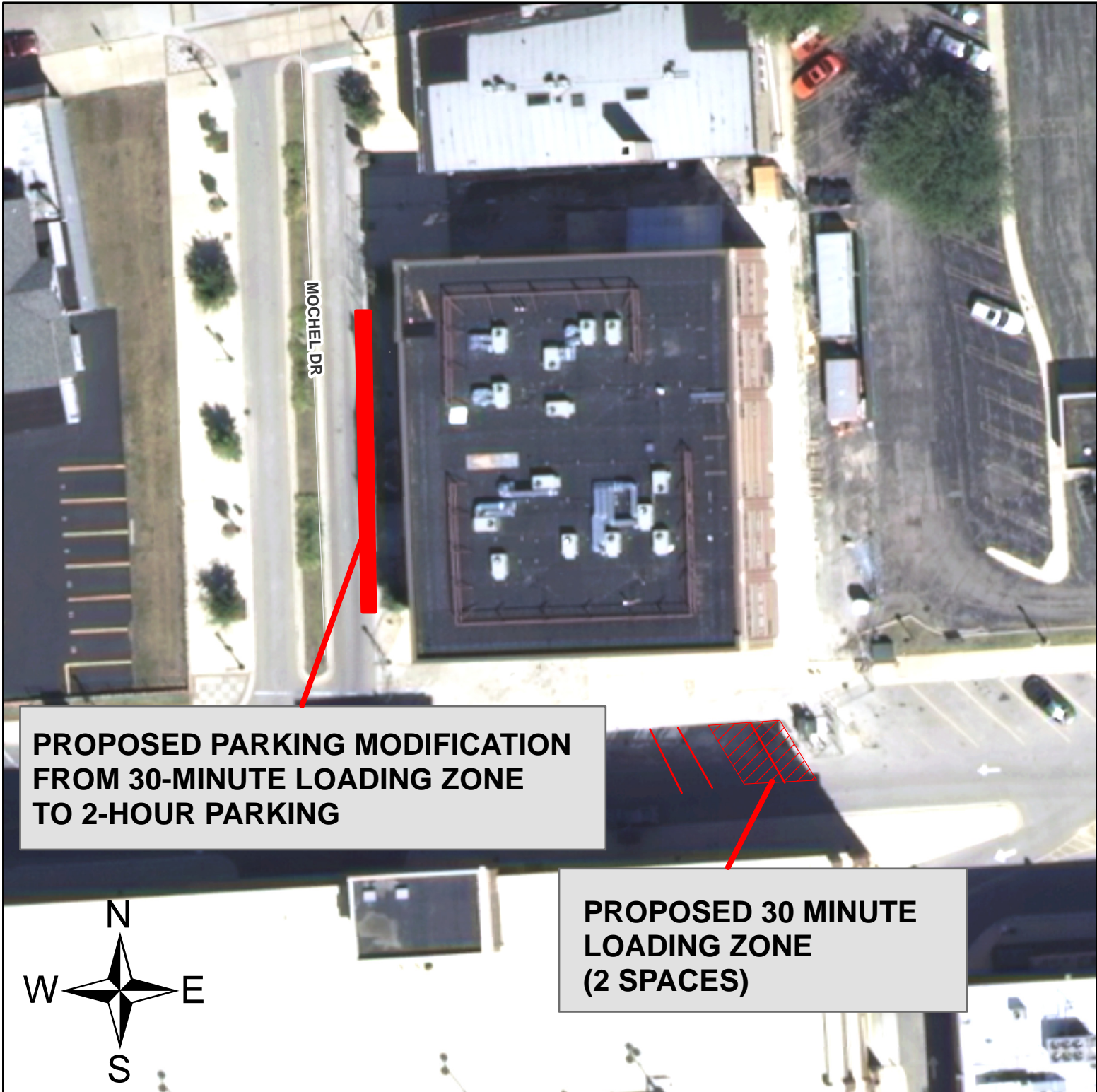
Attest: \_\_\_\_\_  
Village Clerk

# TAP FILE #20-10

## Exhibit1

### MOCHEL DR. at CHARLES PL.

PROPOSED PARKING MODIFICATIONS SEPT. 1, 2010



# **TRANSPORTATION AND PARKING COMMISSION MEETING MINUTES**

**SEPTEMBER 8, 2010**

**2. File #20-10 Mochel Drive at Charles Place - Loading Zone Changes.** Mr. Fera explained this request was coming from the Downtown Management Corporation, which was for the creation of two loading zones at the rear of Charles Place and converting the current loading zone on the west side of Charles Place back to 2-hour parking. Staff was recommending that the two parking spaces in the rear be made as 30-minute loading zones and that the three existing loading spaces on Mochel Drive convert back to 2-hour parking.

Ms. Kunze, Downtown Management Corp., was present to answer questions; none followed.

**MR. STUEBNER MADE A MOTION THAT THE PLAN COMMISSION ACCEPT STAFF'S RECOMMENDATION TO INSTALL TWO 30-MINUTE LOADING SPACES AT THE SOUTH END OF CHARLES PLACE, EAST OF MOCHEL DRIVE, AND CONVERT THE EXISTING 30- MINUTE LOADING ZONES ON MOCHEL DRIVE INTO THREE 2-HOUR PARKING SPACES.**

A question followed as to whether the loading zones were even necessary since minimal traffic was seen in the area.

**Ms. Linda Kunze**, Downtown Management, stated the delivery trucks for the Olive Tap were too large for the area and vehicles were parking longer than the 30 minutes, which made deliveries very difficult. Other tenants have also requested the loading spaces.

**Ms. Marilyn Weiher**, 4808 Wallbank, Downers Grove, explained her initial request was for a 15-minute drop off, but she was told she could have a half-hour loading zone, which she favored even more. The drop-off was fine for tenants who had patients but it did not make sense for deliveries, which was the reason for the request. In addition, she said she is speaking to potential tenants who have inquired about deliveries.

**SECONDED BY MR. CRONIN.**

**MOTION CARRIED UNANIMOUSLY BY VOICE VOTE OF 7-0.**